

FLUKE®



Ti20 Thermal Imager



Spot what's hot

- Non-contact infrared (IR) technology instantly provides thermal images to quickly determine hot spots
- Fully radiometric for detailed temperature analysis and tracking of critical components
- Measures up to 350 °C (662 °F) to cover a broad range of industrial applications
- Complete imaging solution with accessories, training materials and InsideIR™ software for analysis, reporting and routing
- Large, color LCD displays uncluttered image with data and routing instructions

High performance, designed for industrial use

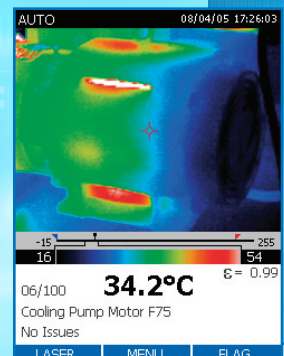
- Uses revolutionary detector technology to provide a clear thermal image with accurate temperature measurements up to 350 °C (662 °F)
- Protected against dust and moisture (IP54 rated) to withstand harsh industrial environments
- Provides 3 hours continuous operation per battery charge

Easy to use

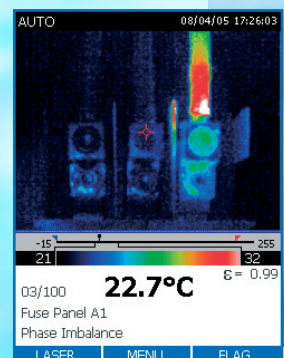
- Fits comfortably in the hand, thanks to weight-balanced design
- Simple "point-focus-shoot" image capture operation
- Speeds predictive maintenance (PdM) inspections with clear on-screen step-by-step routing instructions

Complete solution offering lowest cost of ownership

- Includes InsideIR software for unlimited use by every member of the maintenance team without additional license fees
- Comes complete with all necessary accessories and professional application training material to ensure a fast return on investment



Cooling pump running at operating temperature.



Temperature difference between phases indicates an unbalanced load.

Fluke Ti20 Specifications

Detector	
Detector Type:	128 x 96 uncooled focal plane array
NETD (Thermal Sensitivity):	200 mK
Thermal	
Temperature Range:	-10 °C to 350 °C (14 °F to 662 °F)
Accuracy:	± 2 °C or 2 % (whichever is greater)
Optical	
Field of View (FOV)	20 ° horizontal by 15 ° vertical
Optical resolution (D:S)	75:1 or better
Target Sighting	Single laser (meets IEC Class 2 & FDA Class II requirements)
Controls and Adjustments	
Focus	61 cm (24 in) to infinity
Temperature Scale	°C or °F selectable
Palettes	Grayscale, reverse grayscale, rainbow, ironbow
Measurement Modes	Auto and manual level and span adjustment
LCD Backlight	Bright, dim selectable
Adjustable Emissivity	0.10 to 1.00 in 0.01 increments
Adjustable reflected background temperature	-50 °C to 460 °C (-58 °F to 860 °F)
Environmental	
Ambient Operating Temperature	0 °C to 50 °C (32 °F to 112 °F)
Relative Humidity	10 % to 95 % non-condensing
Storage Temperature	-25 °C to 70 °C (-13 °F to 158 °F) without batteries
Other	
Display	Large color LCD
Storage capacity	50 images stored internally
Power	Rechargeable battery pack or AA batteries
Battery life	Three hours continuous use
Image frame rate	30 Hz, 9 Hz
Thermal analysis software	InsideIR™ (included) full featured analysis and reporting software (unlimited use; no per user license fees)
Size (HxWxD)	254 mm x 102 mm x 178 mm (16 in x 8 in x 12 in)
Weight	1.2 kg (2.65 lb)
Warranty:	1 year

* Subject to U.S. export license compliance. Applicable outside the U.S. and Canada.

Included accessories

- Unlimited use InsideIR PC software for data storage, analysis and reporting
- AC power adapter
- USB communication cable
- Hard carrying case
- Soft-sided carrying case
- Wrist strap
- 2 Rechargeable battery packs
- 1 AA battery case
- Interactive CD with training materials
- Getting Started Guide
- Software and Manual CD



The Fluke Ti20 comes as a complete package

Fluke. Keeping your world up and running.

Fluke Corporation

PO Box 9090, Everett, WA USA 98206

Fluke Europe B.V.
PO Box 1186, 5602 BD
Eindhoven, The Netherlands

For more information call:

In the U.S.A. (800) 443-5853 or

Fax (425) 446-5116

In Europe/M-East/Africa (31 40) 2 675 200 or

Fax (31 40) 2 675 222

In Canada (800) 36-FLUKE or

Fax (905) 890-6866

From other countries +1 (425) 446-5500 or

Fax +1 (425) 446-5116

Web access: <http://www.fluke.com/thermography>

©2005 Fluke Corporation. All rights reserved.

Printed in U.S.A. 1/2006 2558653 D-US-N Rev A